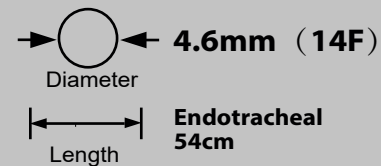
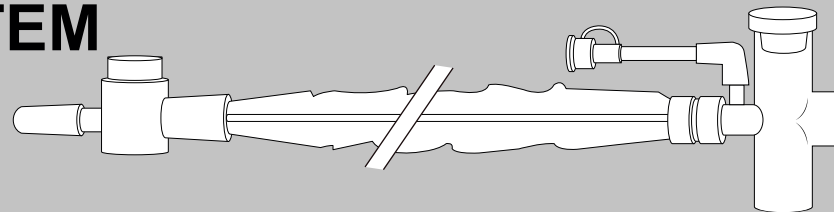




Endotracheal

CLOSED SUCTION SYSTEM

T-Piece Adult



Contents:

- 1 Closed Suction Catheter
- 1 22mm Flex Adapter
- 1 Day Sticker

Trudell Healthcare Solutions
758 Baransway Drive
London, Ontario
Canada, N5V 5J7
Made in China

REF T19TPE214 YYYY-MM

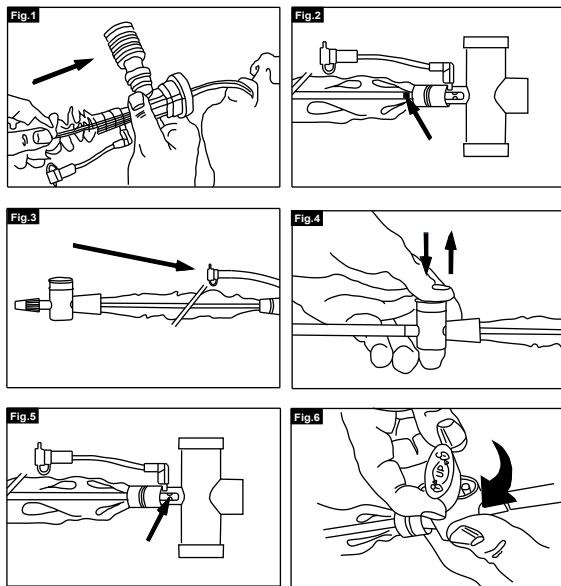
LOT KSYYMMXXX YYYY-MM-DD

DO NOT RE-USE	STERILE R	DO NOT RESTERILIZE	NOT MADE WITH NATURAL RUBBER LATEX	Rx Only	NOT MADE WITH DEHP	DO NOT USE IF PACKAGE IS DAMAGED	CONSULT INSTRUCTIONS FOR USE
---------------	------------------	--------------------	------------------------------------	----------------	--------------------	----------------------------------	------------------------------

TRU TEST®

A Tradition of Trust.

CLOSED SUCTION SYSTEM



Directions For Use:

These instructions apply to the TruTest® Closed Suction System:

Warning:

1. Remove cap on T-Piece before starting continuous flow therapy. Failure to remove cap prior to continuous flow therapy may result in serious injury or death.
2. Do not trim or cut the endotracheal tube (not supplied) while the TruTest® Closed Suction System is attached, otherwise the catheter may also be cut and that portion may be aspirated into the lower respiratory tract and may cause death or serious injury.
3. Do not re-use, reprocess, or resterilize this medical device. Re-use, reprocessing, resterilization may 1) adversely affect the known biocompatibility characteristics of the device, 2) compromise the structural integrity of the device, 3) lead to the device not performing as intended, or 4) create a risk of contamination and cause the transmission of infectious diseases resulting in patient injury, illness, or death.

Cautions:

1. If packing has been compromised do not use product.
2. If a heat and moisture exchanger (HME) is used, ensure that excess fluid does not enter the HME (not included).
3. This is a single patient use only device.
4. The TruTest® Closed Suction System is intended to be used for a 24-hour period before changing. Change more frequently if catheter becomes heavily soiled during use.

5. Do not use 54 cm catheters on tracheostomy patients. Mucosal damage may result.
6. Select the appropriate size TruTest® Closed Suction System. Most experts suggest that the catheter selected should occupy no more than one half of the internal diameter of the artificial airway.
7. Do not leave the catheter within the airway. Always pull back until the black stripe is visible within the sleeve. Any catheter left extended into the airway will cause increased airway resistance.
8. When choosing an appropriate regulated vacuum level, consider that most experts suggest -80 to -120 mmHg (-10.7 to -15.9 kPa).
9. Use appropriate suction technique. Most experts suggest that the suction procedure should last no longer than 10 to 15 seconds and that actual duration of negative pressure should be no longer than 5 to 8 seconds per episode.
10. Always place the thumb valve in the locked position when not in use to prevent inadvertent activation.
11. This medical device is not made with di (2-ethyl hexyl) phthalate (DEHP).
12. The internal volume of patient end adapter is 14 ml. The internal volume of flex adapter is 23 ml.
13. Always use caution and good clinical judgment no matter what ventilator mode is in use. If the clinician notes any signs of suction intolerance such as oxygen desaturation, negative ventilator system pressures, patient stress or excessive discomfort, adjustments to the ventilator settings may need to be made. These adjustments (please refer to the ventilator's

instructions for use) may include manipulation of the inspiratory trigger sensitivity, inspiratory volume or flow rate, and selection of a different ventilator mode; or may require the use of an alternate suction technique. Failure to follow the above precautions may increase the risk of positive and negative barotrauma.

Setup:

1. Select an appropriate size TruTest® Closed Suction System.
2. Apply suction tubing to thumb control valve.
3. Simultaneously depress and hold thumb valve and adjust vacuum regulator to desired level.
4. After releasing thumb control valve, attach the TruTest® Closed Suction System between patient and the breathing circuit.

Suggested Suction Procedure:

1. Always stabilize the TruTest® Closed Suction System and endotracheal (ET) adapter with one hand while pushing the catheter into the endotracheal tube with the thumb and fore-finger of the opposite hand (Fig. 1).
2. Advance catheter to desired depth.
3. Press and hold thumb control valve. Gently withdraw catheter and stop withdrawal when black marking ring is visible inside sleeve (Fig. 2).
4. Release thumb control valve.
5. Repeat steps 1 - 4 above as needed.

Patient Lavage Instructions:

1. Catheter should be advanced 10 - 13 cm into the endotracheal tube.
2. Instill desired amount of fluid into the lavage port.
3. Advance catheter to desired depth and follow the above suggested suction procedure.

Catheter Irrigation Instructions:

1. The black marking ring must be visible in the sleeve (Fig. 2); then open cap on irrigation port.
2. Slowly introduce fluid into the port (Fig. 3), while depressing the thumb control valve (Fig. 4).
3. Irrigate until catheter is clear (Fig. 5).
4. Close cap on port.
5. Lock the control valve by lifting and turning it 180 degrees (Fig. 6).
6. Position catheter and suction tubing beside breathing circuit.

Day Sticker Usage:

1. The TruTest® Closed Suction System is intended for a 24-hour period. Apply the appropriate day sticker to the thumb control valve. Example: If the system is opened on Monday, place the Tuesday sticker on thumb control valve.